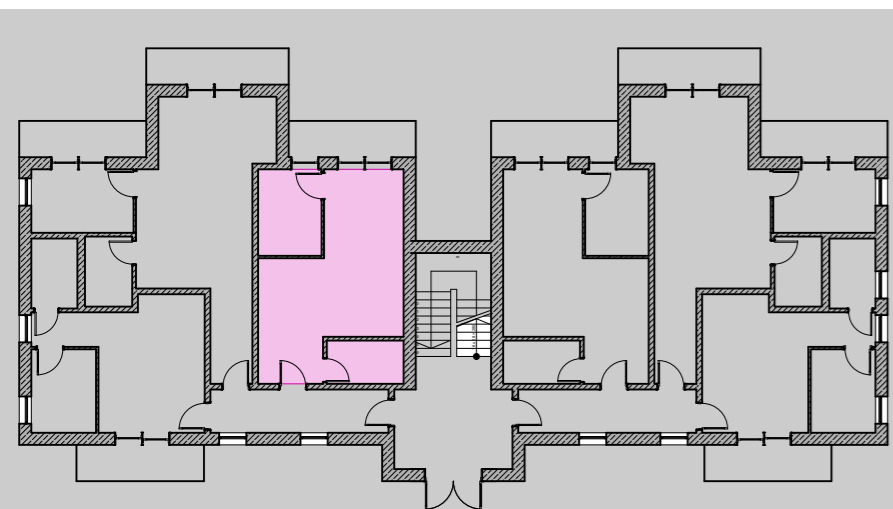
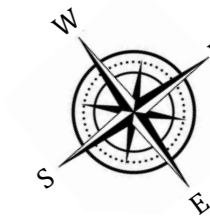
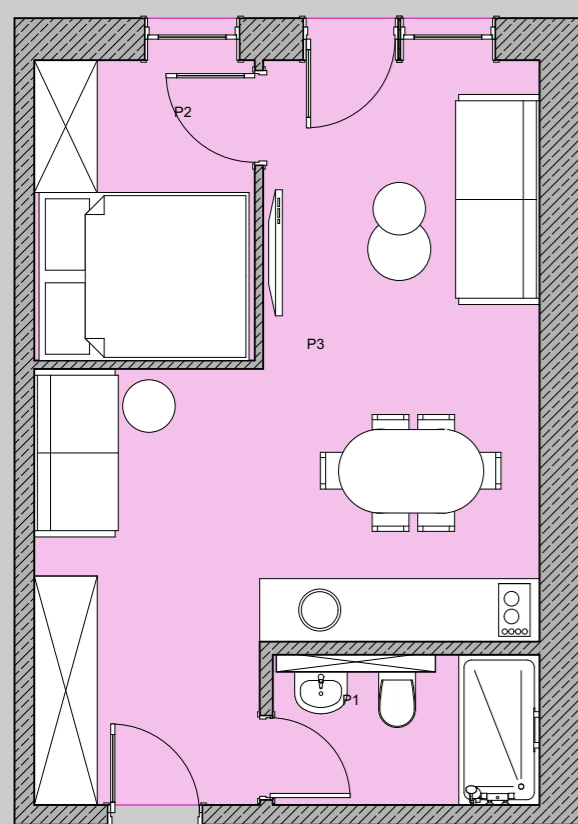


APARTAMENT NR 9 PIĘTRO



P1	ŁAZIENKA	3,6m ²
P2	SYPIALNIA	6m ²
P3	SALON + KUCHNIA	24,4m ²

SUMA 34m²



INWESTOR:
CELBIS DEVELOPER

Tel. 501 - 490 - 409

Tczew, ul 30 Stycznia 31

e-mail: celbis@celbis.pl