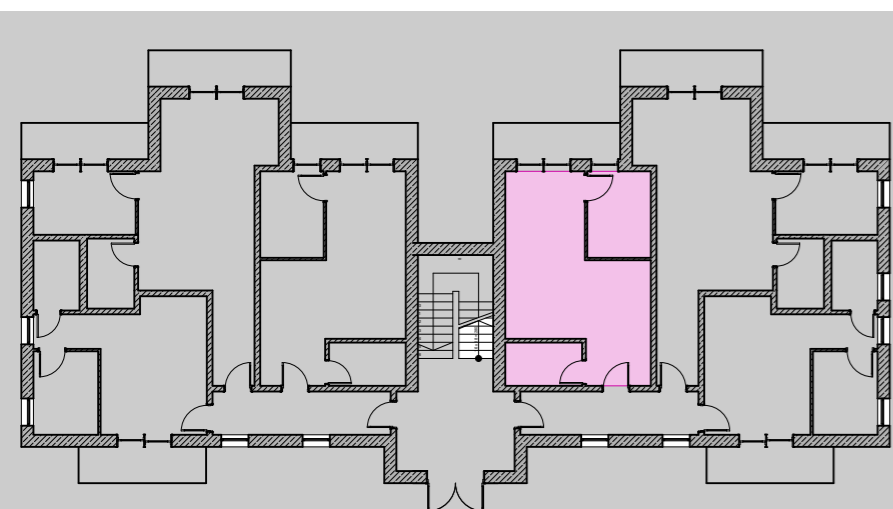
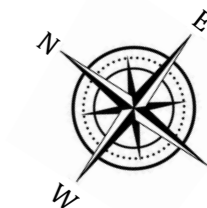
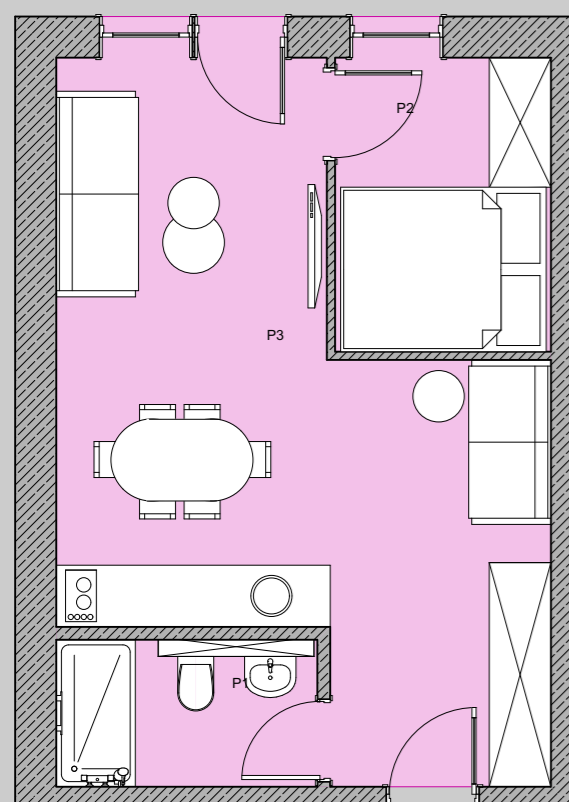


# APARTAMENT NR 10 PIĘTRO



P1	ŁAZIENKA	3,6m <sup>2</sup>
P2	SYPIALNIA	6m <sup>2</sup>
P3	SALON + KUCHNIA	24,4m <sup>2</sup>
SUMA		34m <sup>2</sup>



INWESTOR:  
**CELBIS DEVELOPER**

Tel. 501 - 490 - 409

Tczew, ul 30 Stycznia 31

e-mail: [celbis@celbis.pl](mailto:celbis@celbis.pl)