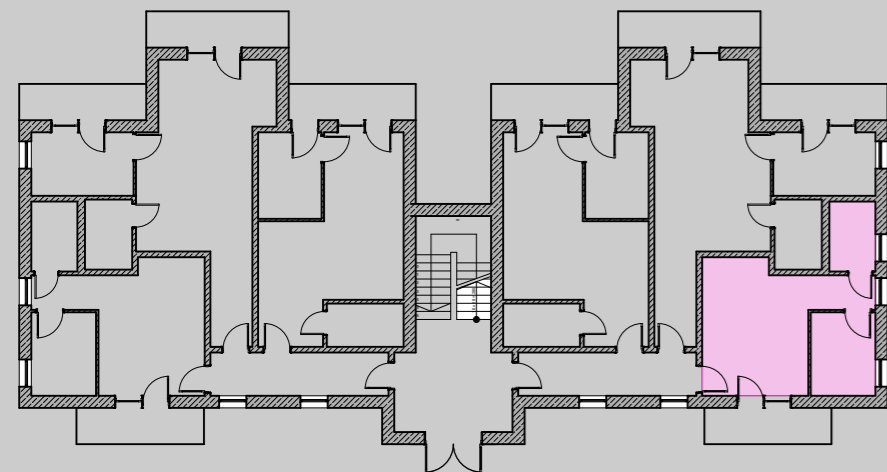
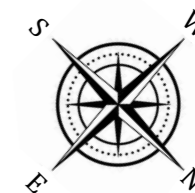
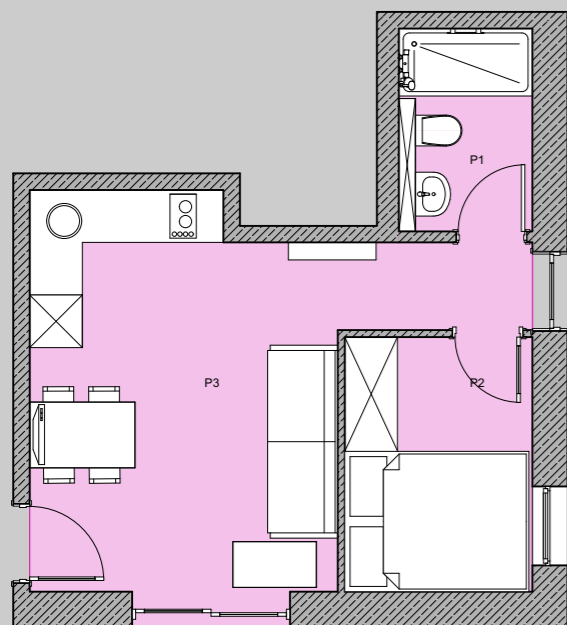


APARTAMENT NR 12 PIĘTRO



| | | |
|----|-----------------|-------------------------------|
| P1 | ŁAZIENKA | 3,6m ² |
| P2 | SYPIALNIA | 6m ² |
| P3 | SALON + KUCHNIA | 17,9m ² |
| | | SUMA 27,3m² |



INWESTOR:
CELBIS DEVELOPER

Tel. 501 - 490 - 409

Tczew, ul 30 Stycznia 31

e-mail: celbis@celbis.pl