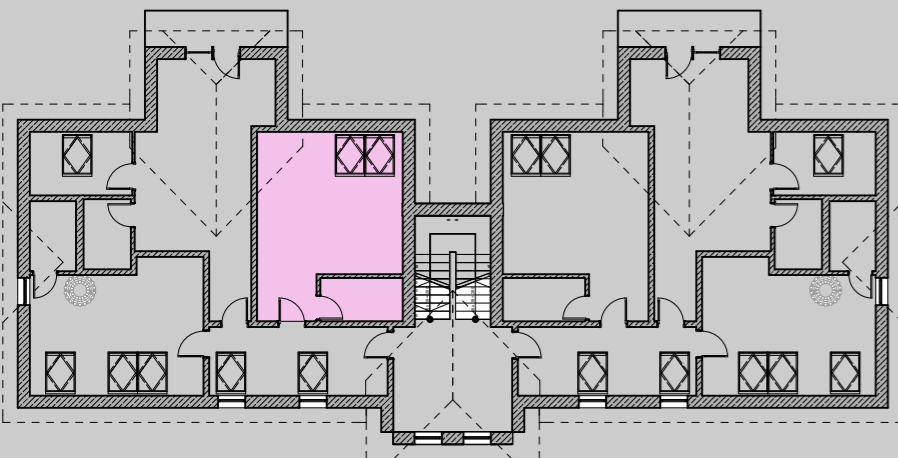
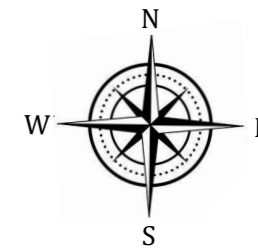
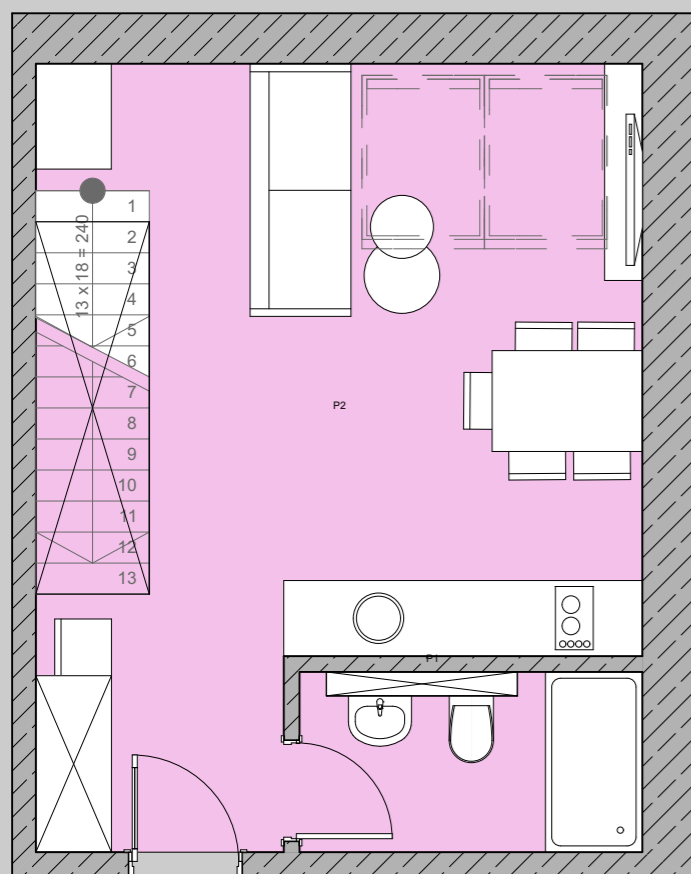


# APARTAMENT NR 15 II PIĘTRO / PODDASZE



P1 ŁAZIENKA  
P2 SALON + KUCHNIA

SUMA 27,9m<sup>2</sup>



INWESTOR:  
**CELBIS DEVELOPER**

Tel. 501 - 490 - 409

Tczew, ul 30 Stycznia 31

e-mail: [celbis@celbis.pl](mailto:celbis@celbis.pl)