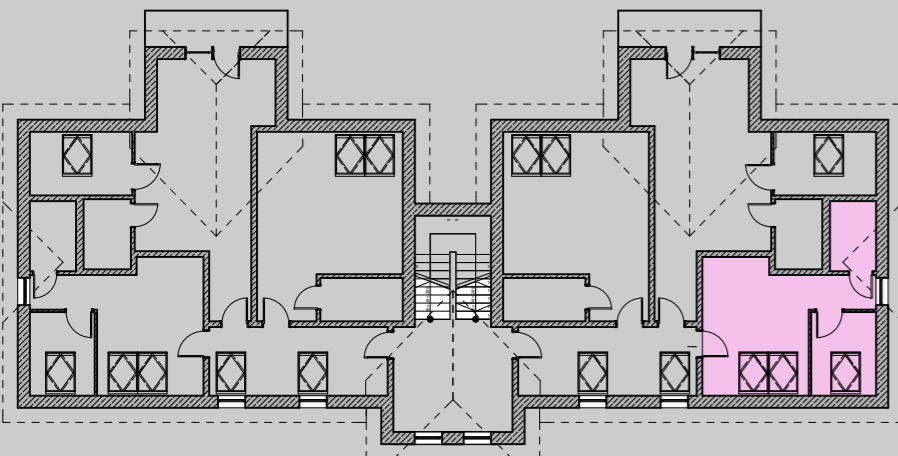
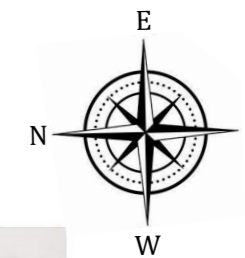
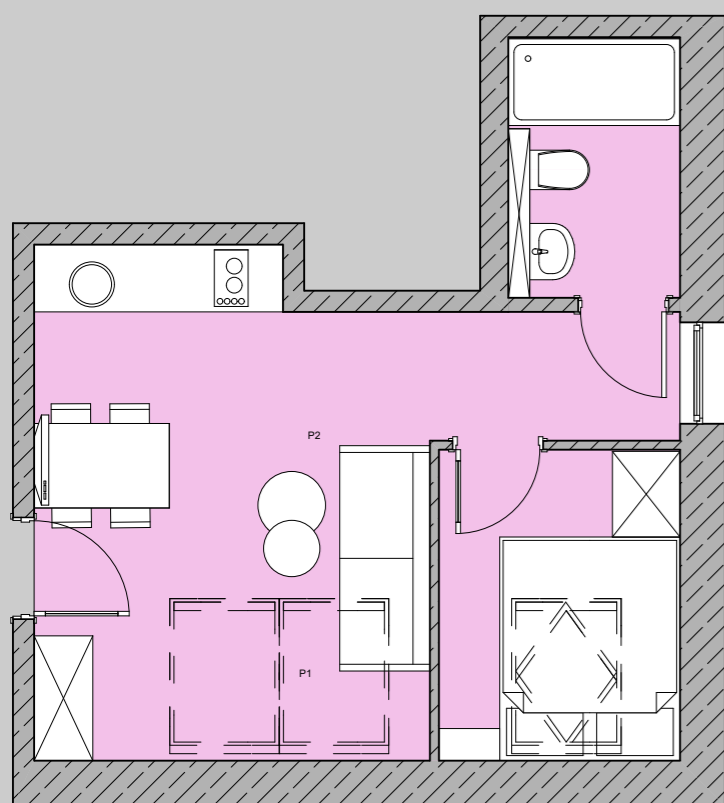


# APARTAMENT NR 18 II PIĘTRO / PODDASZE



- P1 ŁAZIENKA
  - P3 SYPIALNIA
  - P2 SALON + KUCHNIA
- SUMA 22,1m<sup>2</sup>



INWESTOR:  
**CELBIS DEVELOPER**

Tel. 501 - 490 - 409

Tczew, ul 30 Stycznia 31

e-mail: [celbis@celbis.pl](mailto:celbis@celbis.pl)